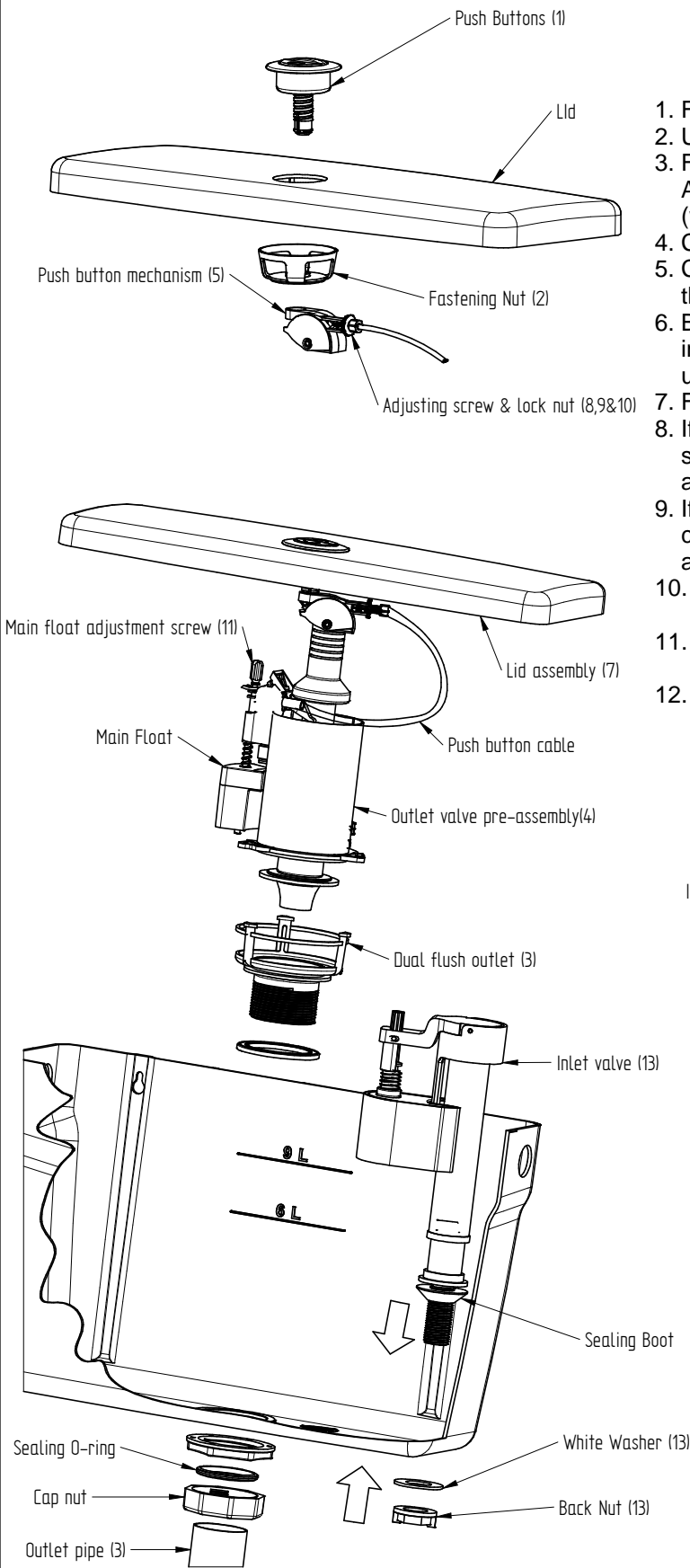
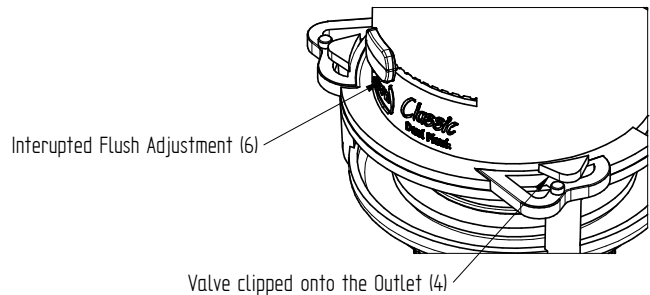


# Classic Dual Flush Valve Assembly



## Outlet Valve

1. Fit push button into lid.
2. Use fastening nut to secure button in place.
3. Fit dual flush outlet into cistern tank.  
At the same time connect outlet pipe to toilet bowl (when applicable in low level application)
4. Clip outlet valve pre-assembly to dual flush outlet.
5. Clip push button mechanism to push button fitted into the lid.
6. By moving the interrupted flush adjustment knob you can increase or decrease the amount of water flushed by up to 1 litre.
7. Fit lid assembly to cistern box.
8. If no full flush is obtained then too much play is in the cable sleeve. Loosen lock nut and adjust screw to take up play and retighten locknut.
9. If no half flush is obtained then not enough play is in the cable sleeve. Loosen lock nut and adjust screw to add play and retighten locknut.
10. If cable sleeve has too much tension valve could possibly leak.
11. Adjust main full flush float by turning main float screw adjustment to raise or lower the float.
12. Orientate valve so that the cable does not interfere with other parts in the cistern.



## Inlet Valve

1. Insert valve into cistern with sealing boot on the inside of the cistern.
2. Position valve, ensuring the reservoir is not in contact with the cistern and is able to move freely.
3. Place the white washer on the outside of the cistern. Fasten the backnut but do not overtighten.
4. Flush the main line to remove dirt, flux and solder residue.
5. Adjust the valve height by turning the telescopic stem anti-clockwise to unlock. Move the valve up or down to the desired water level\*. The top of the valve should not protrude above the cistern rim. Turn the telescopic stem clockwise to lock into place.
6. Connect water supply.

Do not use putty



Reg. No.1947/025245/07

14 Dienst Street, Alrode Ext 2, Alberton  
PO Box 145092, Bracken Gardens, 1452  
Republic of South Africa

Telephone : 27 11 617 5000 Branches  
Fax General: 27 11 864 1585 Cape Town: 27 21 951 1100  
Fax sales: 086 673 6593 Durban: 27 31 705 2533  
Fax Accounts: 27 11 864 6993 PE: 27 41 486 3678  
Fax Works: 27 11 864 3202 Website: www.duttonplastics.com

Guaranteed when installed by a qualified plumber

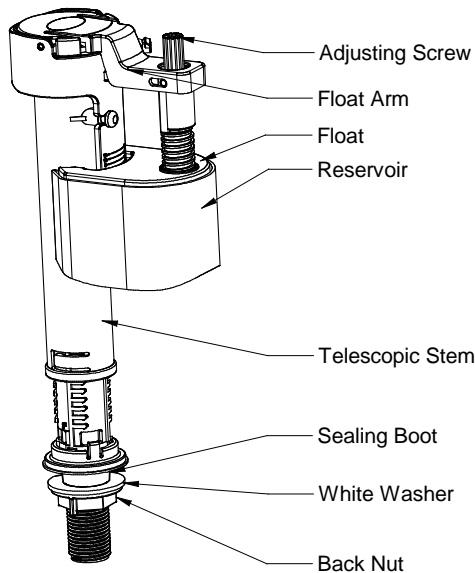
# INSTALLATION INSTRUCTIONS FOR FILL MASTER INLET VALVE

1

## Fill Master:

Assembly & Parts list.

Working pressure up to 14 Bar.



2

Insert valve into cistern with sealing boot on the inside of the cistern.

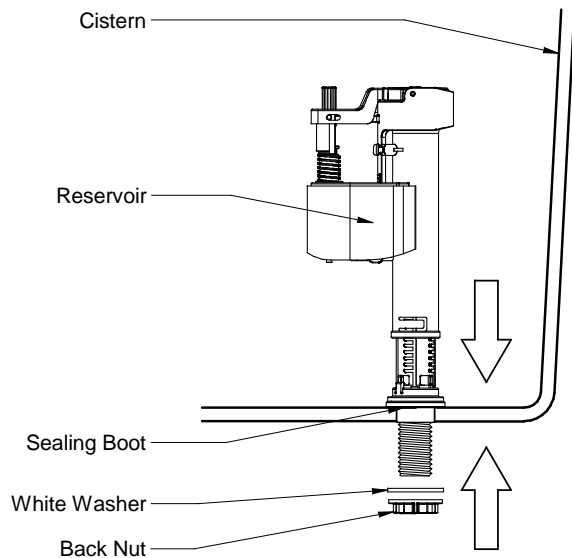
**Do not use putty.**

Position valve, ensuring the reservoir is not in contact with the cistern and is able to move freely.

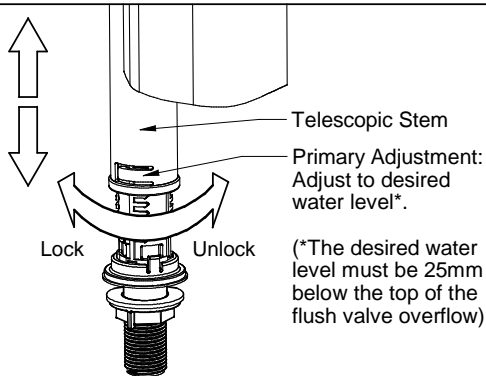
Place the white washer on the outside of the cistern. Fasten the backnut but do not overtighten.

Flush the main water line to remove dirt, flux and solder residue.

Connect water supply.

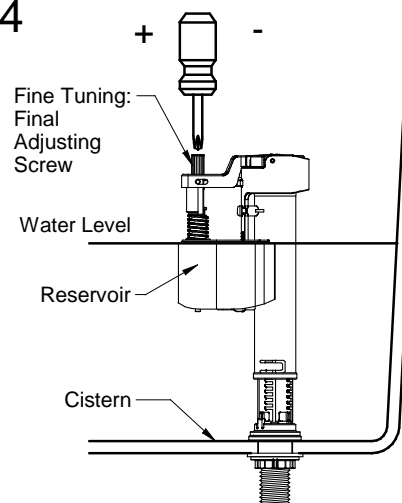


3



Adjust the valve height by turning the telescopic stem anti-clockwise to unlock. Move the valve up or down to the desired water level\*. The top of the valve should not protrude above the cistern rim. Turn the telescopic stem clockwise to lock into place.

4



The water supply can now be turned on.

The desired water level\* can be adjusted by turning the final adjusting screw clockwise or anti-clockwise to move the reservoir up or down to achieve the required level.



**Dutton Plastics**  
ENGINEERING

A Division of the Zimco Group (Pty) Ltd.

Reg. No:1947/025245/07

14 Dienst Street ,Alrode Ext 2, Alberton  
PO Box 145092, Bracken Gardens ,1452  
Republic of South Africa

**Head Office:**

Tel: 011-617-5000

Fax: 011-864-2677

**Branches:**

Cape Town: 021-552-4460

Durban: 031-705-2533

Port Elizabeth: 041-373-0462

Website: [www.duttonplastics.com](http://www.duttonplastics.com)