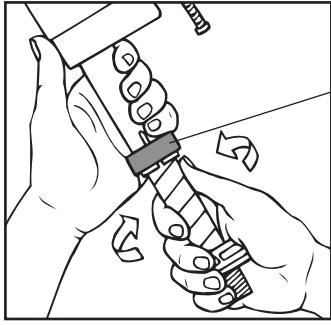


IMPORTANT INSTALLATION TIPS

(See reverse for complete installation instructions)

SETTING THE VALVE HEIGHT:

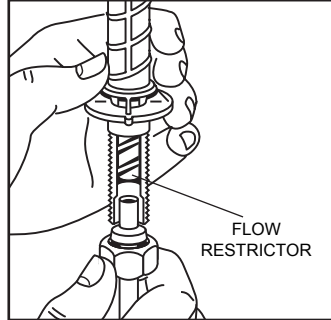
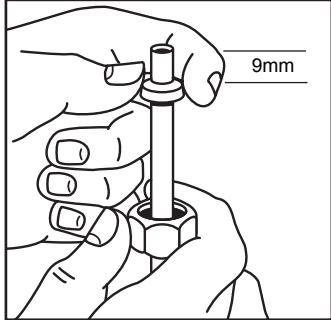


WHEN ADJUSTING HEIGHT,
DO NOT MOVE OR REMOVE
GREY RING.

The valve height should be adjusted so that the critical level mark "C.L." on the valve is located at least 25mm. ABOVE the overflow outlet. The 400UK valve can be adjusted from 225mm. to 350mm. to fit most cisterns by TWISTING THE SHANK in or out of the valve body.

When the valve height is being adjusted, an audible clicking noise can be heard. After the correct valve height has been set, should you hear the "clicking" noise as you continue to install the valve, it means you have accidentally adjusted the height and you should be sure the valve is set to the correct height.

SUPPLY TUBE INSTALLATION:



Care should be taken when installing the 400UK with a copper water supply line to prevent the copper pipe from coming into contact with the optional valve filter and/or restrictor. This may block the flow of water or cause a slow refill of the cistern.

The copper pipe should be inserted no more than 9mm. (3/8") into the inlet of the shank. An easy way to assure this is to put the washer, crox or olive on the pipe 9mm. (3/8") from the end.

Insert the pipe into the shank and tighten down the nut without moving the pipe further into the shank.

TROUBLESHOOTING:

YOU HAVE GOOD MAINS PRESSURE. but you can't get water into the cistern, or refill is slow:

Check supply tube installation (See above).

• Check that the cap assembly is in the locked position.

VALVE WON'T SHUT OFF– Repeat Step 5 of instructions.

VALVE TURNS ON AND OFF during periods of non use –**WATER WASTE SIGNAL:**

• Check your outlet valve – The outlet valve is worn or the outlet washer is worn.

IN AREAS WITH UNUSUALLY HIGH WATER PRESSURE above 1000 KPA, a pressure reduction valve should be fitted. If less than 1000 KPA, the flow rate can be reduced by adjusting the stop cock.

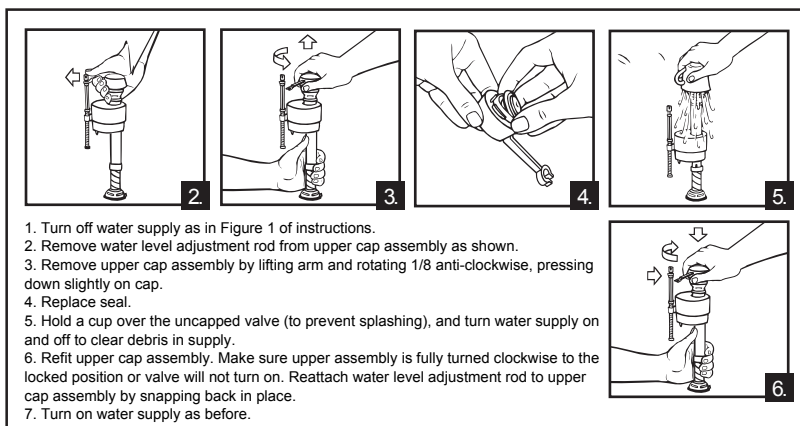
The inlet valve's quick filling action means the stop cock may not have to be fully open when filling the cistern.

Service Parts Available
Ask Your Dealer



No. 242UK061
Standard
Replacement Seal

MAINTENANCE & SEAL REPLACEMENT



1. Turn off water supply as in Figure 1 of instructions.
2. Remove water level adjustment rod from upper cap assembly as shown.
3. Remove upper cap assembly by lifting arm and rotating 1/8 anti-clockwise, pressing down slightly on cap.
4. Replace seal.
5. Hold a cup over the uncapped valve (to prevent splashing), and turn water supply on and off to clear debris in supply.
6. Refit upper cap assembly. Make sure upper assembly is fully turned clockwise to the locked position or valve will not turn on. Reattach water level adjustment rod to upper cap assembly by snapping back in place.
7. Turn on water supply as before.

IF VALVE WON'T TURN ON OR SHUT OFF, OR REFILL OF CISTERN BECOMES SLOW after valve has been in use for some time:

• A replacement seal may be needed. Ask your dealer for 242UK061 Replacement Seal

• Check for debris under the seal and flush valve as per installation instructions (Step 5).

WATER WASTE SIGNAL:

IF VALVE TURNS ON AND OFF DURING PERIODS OF NON USE:

• Your outlet valve may be worn or need a replacement washer.

GUARANTEE: This Fluidmaster product is guaranteed to be free from defective materials and workmanship for a period of one year. Units returned to Fluidmaster, USA, or Haron International, Australia, will be replaced without charge.

Always use quality Fluidmaster repair parts when maintaining your Fluidmaster products. Fluidmaster shall not be responsible or liable for any damages caused by products used in Fluidmaster valves that were not manufactured by Fluidmaster, Inc.

MADE IN U.S.A. PATENT NUMBERS U.S.-244693, 245172, 3428966, 3429333, 3495803, 3669138, 4080986, 4100928, 4327941, 4416302; AUSTRALIA-421225, 423785, 427099, 433341, 489821, 587088; BELGIUM-699955, 769268; BRAZIL-991353; CANADA-834406, 834517, 842557, 842558, 842559, 842560, 849302, 857002, 925398, 1046892, 1065731, 1065732, 1065733, 1065734, 1130509; COLOMBIA-19919; GERMANY-2132631; GREAT BRITAIN-1298646, 1528291; HONG KONG-857; ITALY-807405, 935451; JAPAN-810259, 1039296, 1108738, 543961, 578536; MEXICO-129183, 1444000, 145652; NETHERLANDS-141630, 144013, 162449; SINGAPORE-270-1973; SOUTH AFRICA-72-8273, 72-8734; SPAIN-342777, 393324; SWEDEN-346348, 372584; SWITZERLAND-545389,